



User's Guide

The information contained in this document is subject to change without notice. Horizon Datasys Corporation assumes no responsibility or obligation of any kind for any errors contained herein or in connection with the furnishing, performance, or use of this document.

Trademarks or Service Marks

Drive Vaccine PC Restore Plus is a registered trademark of Horizon Datasys Corporation in the U.S.A. Other brands and products are trademarks of their respective holders.

Copyright

This document is a copyright © 2008 of Horizon Datasys Corporation. All rights reserved. No part of this document may be reproduced in any form, including photocopying or translation to another language, without the prior written consent of Horizon Datasys Corporation.

License and Warranty

The software that accompanies this license (the "software") is the property of Horizon Datasys, Inc. (HDS) and is protected by international copyright laws. Horizon Datasys holds the trademark of Drive Vaccine PC Restore Plus. You will have certain rights to use the software after your acceptance of this license.

You May

Install only one copy of the software under one license.

Make only one copy of the software for archival purposes.

Transfer the software on permanent basis to another entity, provided that you retain no copies of the software to Horizon Datasys Corporation.

You May Not

Rent or lease any portion of the software.

Reverse engineer, decompile, disassemble, modify, translate, make any attempts to cover the source code of the software or create derivative works from the software.

Use a previous version or copy of the software after you have received a replacement set or an upgraded version of the software.

Limited Warranty

Horizon Datasys Corporation warrants that the media on which the software is distributed will be free from defects for a period of thirty (30) days from the delivery date of the software. Horizon Datasys does not warrant that the software will meet your requirements or that the software will be error-free.

Disclaimer of Damages

IN NO EVENT WILL HORIZON DATASYS BE LIABLE TO YOU FOR ANY SPECIAL, CONSEQUENTIAL, INDIRECT OR SIMILAR DAMAGES, INCLUDING ANY LOST PROFITS OR LOST DATA ARISING OUT OF THE USE OR INABILITY TO USE THE SOFTWARE EVEN IF HORIZON DATASYS HAS BEEN ADVISED OF THE POSSIBILITY OF SUCH DAMAGES. IN NO CASE SHALL HORIZON DATASYS'S LIABILITY EXCEED THE PURCHASE PRICE FOR THE SOFTWARE.

The disclaimers and limitations above apply regardless of whether you accept the software.



Chapter 1

Introduction

Introduction

Thank you for choosing Drive Vaccine PC Restore Plus. This User's Guide is provided to you to familiar yourself with the product. You can find the complete list of all the product's features and a brief description of each feature in this document. It is highly recommended that you read this User's Guide carefully before setup and start to explore Drive Vaccine PC Restore Plus. The information contained in this User's Guide is subject to change without notice. Horizon Datasys assumes no responsibility or obligation of any kind for any errors contained herein or in connection with the furnishing, performance, or use of this document.

Drive Vaccine PC Restore Plus is a PC baseline recovery software. It allows computer workstations to start-up fully functional with their desired system configurations. Regardless of what any user may attempt to do to the systems, including erasing files, installing software, downloading programs or deliberately tampering with registry settings, Drive Vaccine PC Restore Plus will reset the PCs to their desired baseline settings upon restart, making the workstations perfectly configured and available for the next user.

What makes Drive Vaccine PC Restore Plus Professional the best choice for your PC rollback solution?

- ❖ Non restrictive design, freedom for users to use PC workstations without penalty. Easy to deploy to a network of workstations in minutes.
- ❖ Extremely fast, restore a 100Gb hard drive in seconds.
- ❖ Do not require hidden partitions or special files or folders to setup and run.

- ❖ Flexible restore options, restore baseline on restart, restore on logoff, restore on the 1st boot up of that day, restore daily, restore weekly or only restore when desired.
- ❖ Easy to update baseline, do not need to disable protection to make changes to the baseline. Simply make changes to the system and then set it as the new baseline.
- ❖ An exemption drive can be configured to keep data unchanged from rollback.

What Can Drive Vaccine PC Restore Plus Do?

Drive Vaccine PC Restore Plus allows you quickly and easily to:

- ❖ Reset public-access PC workstations to clean, pre-configured baseline after each session.
- ❖ Clean up virus or spyware infections.
- ❖ Restore system when Windows fails to start up.
- ❖ Remove unauthorized software installations.
- ❖ Rollback failed software deployment.
- ❖ Fix user, program or Windows program problems.
- ❖ Provide a test bed for software testing.
- ❖ Prevent identify thief and key board logging.
- ❖ Enforce a common operating environment.

Drive Vaccine PC Restore Plus Benefits?

- ❖ Reduces computer maintenance by up to 90%.
- ❖ Reduces organization feuds when writing restriction policies.
- ❖ Reduces friction with technology implementation & learning.
- ❖ Reduces Total Cost of Ownership of an organization's assets by minimizing hard drive maintenance, administration time, and troubleshooting.
- ❖ Reduces unnecessary anxiety related to allowing users access.

- ❖ Eliminates re-imaging of computers.
- ❖ Eliminates common negative consequences of user experimentation.
- ❖ Eliminates downtime or "out of order" signs at user computers.
- ❖ Simplifies the maintenance process and environment.
- ❖ Instantly refreshes computers to their optimal working state.
- ❖ Significantly lowers Total Cost of Ownership of Technology Assets.
- ❖ Ensures consistent configurations.
- ❖ Prevent identify theft and key board logging.
- ❖ Enforce a common operating environment.

Program Components

Familiar yourself with Drive Vaccine PC Restore Plus's program components before continue to explore Drive Vaccine PC Restore Plus.

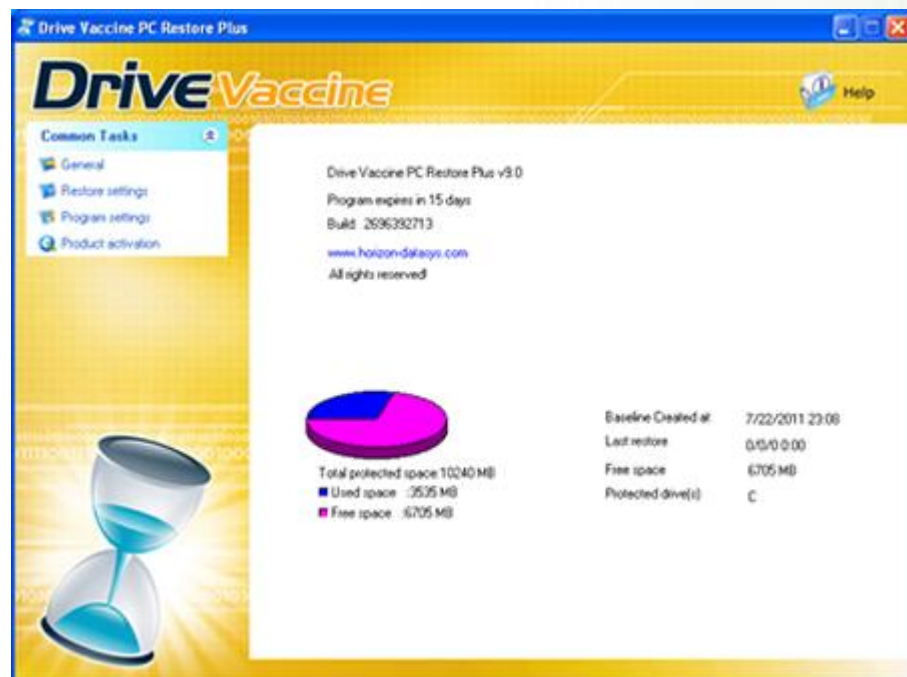
Subsystem Console Interface to Drive Vaccine PC Restore Plus's disk operating system (DOS), which is a mini-operating system working under Windows operating system to provide you restoring ability when Windows fails to start while Drive Vaccine PC Restore Plus is in the disable restore mode. You can access the Subsystem Console by press the HOME key on the keyboard during the system startup.



System Tray Icon It is the shortcut to Drive Vaccine PC Restore Plus on your desktop. You can find it in the lower right hand corner of your Windows desktop. System Tray Icon provides you a quick access to the program console. Right click on the system Tray Icon to bring up its menu.



Application Console Drive Vaccine PC Restore Plus's primary user interface in Windows. There you can find easy and quick access to all the program features.





Chapter 2

Setup

System Requirements

Drive Vaccine PC Restore Plus system requirements:

- ❖ Intel® Pentium® or equivalent processor
- ❖ Microsoft® Windows® 2000, Windows XP Professional, Home Edition, Windows Vista™ or Windows 7.
- ❖ 256MB of RAM
- ❖ CD/DVD ROM if you need to setup from a CD

Default Setup

Default Setup will install Drive Vaccine PC Restore Plus with the default program settings. During the default setup, you will be prompted to enter/configure the following Drive Vaccine PC Restore Plus program settings:

- ❖ Enable/Disable Windows System Restore to maximum disk space usage
- ❖ Product ID
- ❖ Set Drive Vaccine PC Restore Plus administrator password
- ❖ Select the partition to protect
- ❖ Enable/Disable an exemption drive

Custom Setup

Custom Setup lets you to configure all the program settings during setup. During the custom setup, you will be prompted to enter/configure the following Drive Vaccine PC Restore Plus program settings:

- ❖ Enable/Disable Windows System Restore to maximum disk space usage
- ❖ Product ID
- ❖ Where to copy program files to
- ❖ Setup of Windows multi-boot systems
- ❖ Set Drive Vaccine PC Restore Plus administrator password
- ❖ Select the partition to protect
- ❖ Enable/Disable an exemption drive

Advanced Setup

Advanced Setup is used to deploy Drive Vaccine PC Restore Plus to a network of computers with pre-configured program settings. Advanced Setup reads in the program settings from a setup configuration file, **setup.cfg**. You can create the **setup.cfg** configuration file using **Advanced Setup Configuration Wizard** (ASCW) provided in the support folder on the program CD. With **ASCW**, you can configure all the Drive Vaccine PC Restore Plus program settings.

Deployment

To mass deploy Drive Vaccine PC Restore Plus with Windows active directory, SMS software deployment tools, Network logon scripts, or Ghost system images, refer to the Drive Vaccine PC Restore Plus Deployment Whitepaper included in the Support folder on the program CD.

Product Activation

Drive Vaccine PC Restore Plus contains software-based product activation technology, which means you must activate your Drive Vaccine PC Restore Plus installation in order to authenticate its license.

Activate Drive Vaccine PC Restore Plus over the Internet Connection

If the computer has Drive Vaccine PC Restore Plus installed is connected to Internet, you can easily activate Drive Vaccine PC Restore Plus over the Internet connection.

1. Upon the purchase of Drive Vaccine PC Restore Plus, you will receive a Licensed Product ID from Horizon Datasys. You can install Drive Vaccine PC Restore Plus with the Licensed Product ID and the activation will be done automatically during setup. If you already have a demo version of Drive Vaccine PC Restore Plus installed, you can activate the demo setup with the Licensed Product ID without uninstall and reinstall the program.
2. To activate Drive Vaccine PC Restore Plus over Internet connection, right click Drive Vaccine PC Restore Plus system tray icon and select ABOUT from the popup menu. Click on the Activate button on the ABOUT Window, select "Activate Drive Vaccine PC Restore Plus over Internet connection", click on Next.
3. Copy and paste the Licensed Product ID that you received from Horizon Datasys into the Product ID field replacing the demo Product ID, and then click on the Activate button.

That is it! You won't need to supply any other information for the activation.

* You can only activate number of computers licensed by the Licensed Product ID.

Activate Drive Vaccine PC Restore Plus without the Internet Connection

If the computer has Drive Vaccine PC Restore Plus installed does not have an Internet connection, you need to manually activate Drive Vaccine PC Restore Plus with a registration code.

1. To manually activate Drive Vaccine PC Restore Plus, right click Drive Vaccine PC Restore Plus system tray icon and select ABOUT from the popup menu. Click on the Activate button on the ABOUT Window, select "Activate Drive Vaccine PC Restore Plus without Internet connection", click on Next.
2. On the Product Activation Window, you will see a Product ID and an Activation ID, write down those two IDs and send them to Horizon Datasys tech support by fax/phone or email.
3. Horizon Datasys tech support will reply you with an Activation Code based on the Product ID and Activation ID you provided.
4. Copy and paste the Activation Code into the Activation code field and then the Activate button.

That is it! You won't need to supply any other information.



Chapter 3

Restore Settings

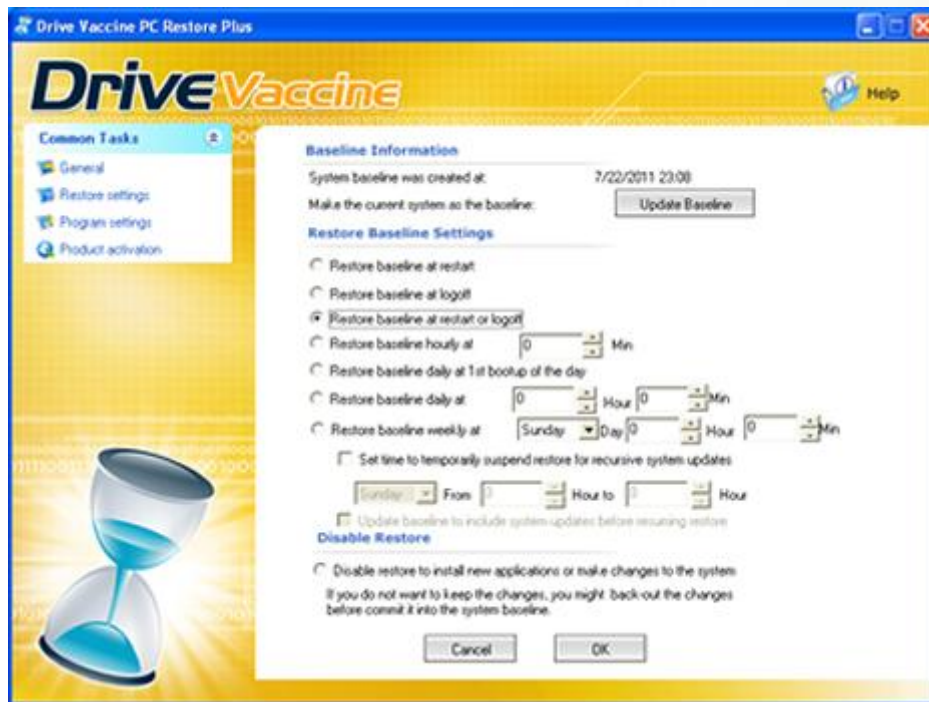
Baseline Information

Baseline is the cornerstone of Drive Vaccine PC Restore Plus, it's a system condition including system settings and programs, that you want Drive Vaccine PC Restore Plus restores to upon reboot. Baseline information shows you the time when the baseline is created, here you can also **Update Baseline** to include the current system settings and data into the Baseline.

1. To view baseline information or update baseline to include the current system settings and data, right click the Drive Vaccine PC Restore Plus icon in the system tray, select "**Main Menu**" from the popup menu.



2. In the Main Menu, click on "**Restore Settings**". The baseline information is displayed at the top of the page.
3. Click on "**Update Baseline**" to make the current system as the new baseline. Update baseline completes in seconds without reboot the computer.



Restore Baseline Settings

You can configure Drive Vaccine PC Restore Plus to automatically restore the baseline according to one of the 7 settings:

- ❖ Restore baseline at restart
- ❖ Restore baseline at logoff
- ❖ Restore baseline at restart & logoff
- ❖ Restore baseline hourly at XX min
- ❖ Restore baseline daily at first boot up of the day
- ❖ Restore baseline daily at XX hour XX min
- ❖ Restore baseline weekly at XX day XX hour XX min



You can also choose to restore the baseline at any time by pressing the Restore Now button.

You can configure a time range to temporarily suspend the restore for recursive system updates and configure Drive Vaccine PC Restore Plus to automatically update baseline at end of the suspension.



For example:

1. *You need to restore your lab computers to baseline on reboot.*
2. *You also need the computers to install Windows updates and virus updates every Friday between 7pm to 8pm.*

To satisfy your requirements, you would:

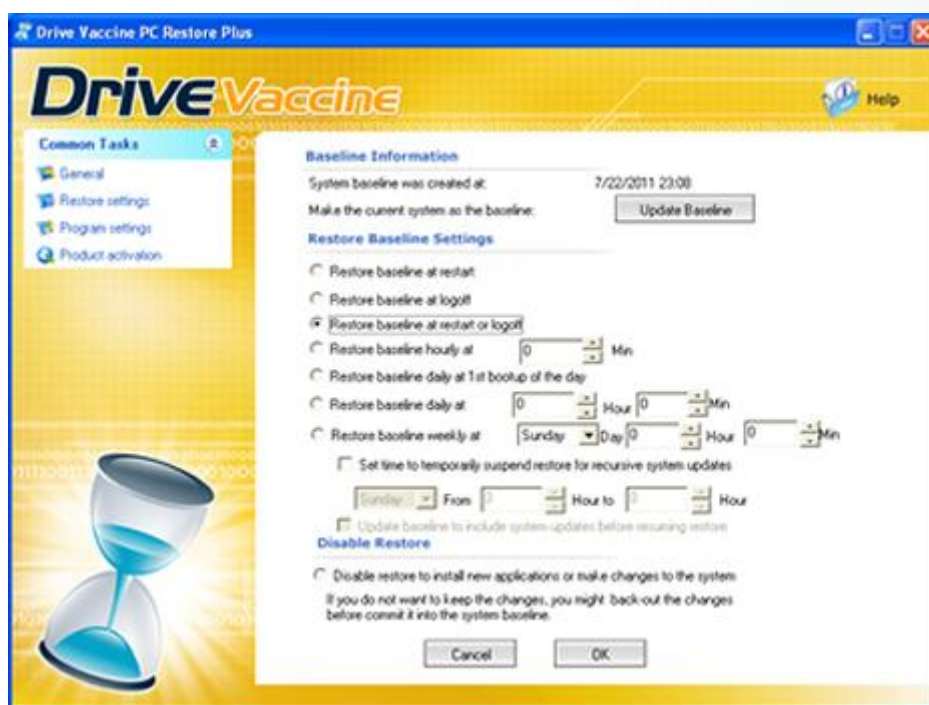
- A. *Configure Drive Vaccine PC Restore Plus to restore baseline at restart.*
- B. *Configure "set time to temporarily disable restore for recursive system updates" to Friday, 7pm to 8am.*
- C. *Check the "Update baseline to include the system updates before resuming restore" option.*

As the result, the lab computers will restore baseline on every reboot. But every Friday between 7pm to 8am, the restore is suspended to allow Windows and virus updates which might reboot the computers. At end of the suspension, at 8pm, Drive Vaccine PC Restore Plus will update the baseline to include the Windows updates and virus updates. At 8:01pm, the computers will resume restore to the new baseline including Windows updates and virus updates upon reboot!

1. To configure restore baseline settings, right click the Drive Vaccine PC Restore Plus icon in the system tray, select "**Main Menu**" from the popup menu.



2. In the Main Menu, click on "**Restore Settings**". Make your selection on the right hand panel.



Disable Restore

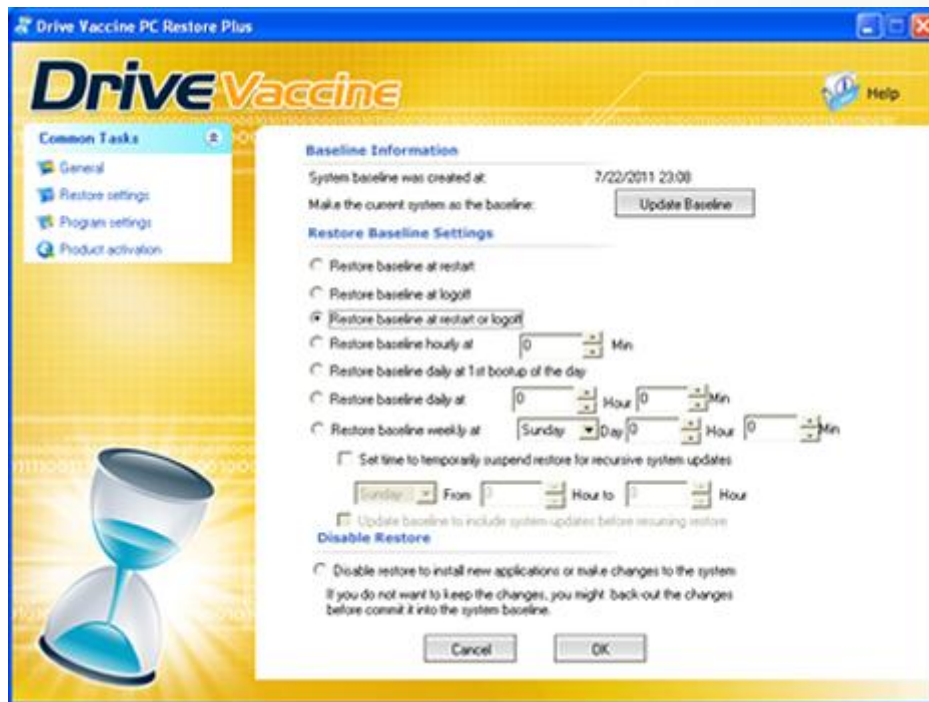
You can disable Drive Vaccine PC Restore Plus's restore to make changes to the system. After you make changes to the system, you need to run **Update Baseline** to include the changes into the new baseline. If you do not want to keep the changes, Drive Vaccine PC Restore Plus provides you a last-chance-restore, you can **Back-Out the Changes**

1. To disable Drive Vaccine PC Restore Plus's restore to make changes to the system, right click the Drive Vaccine PC Restore Plus icon in the system tray, select "**Main Menu**" from the popup menu.



2. In the Main Menu, click on "**Restore Settings**", select the "Disable Restore" option.

If you do not want to keep the changes, Drive Vaccine PC Restore Plus provides you a last-chance-restore, click on **Back-Out Changes** to rollback the changes made to the system while Drive Vaccine PC Restore Plus is in the disabled mode.



Restore from Subsystem

You can disable Drive Vaccine PC Restore Plus's restore to make changes to the system. If you do not want to keep the changes, Drive Vaccine PC Restore Plus provides you a last-chance-restore to **Back-Out the Changes**. But what if the changes made to the system cause the Windows unbootable, how do you back-out the changes from that? Drive Vaccine PC Restore Plus allows you to Back-out the changes from a **pre-OS subsystem**.

1. To back-out changes from the pre-OS subsystem, restart the computer and press the HOME key after the BIOS screen to access the Drive Vaccine PC Restore Plus subsystem console.
2. You will be prompted to enter a password for the Administrator account to enter the subsystem console. Select Restore Now from the subsystem menu to back-out changes.



Support-Tech Restore is used for when a support-technician or a teacher needs to restore from the subsystem and you do not want to give out your Drive Vaccine PC Restore Plus administrator password. Follow these steps to perform a support-tech restore:

1. Restart the PC.
2. Press F9 key during startup (when the Drive Vaccine PC Restore Plus Subsystem loads).

The password for the support-tech restore can be set using the command line switch `shieldcmd.exe /supportpwd`.



Chapter 4

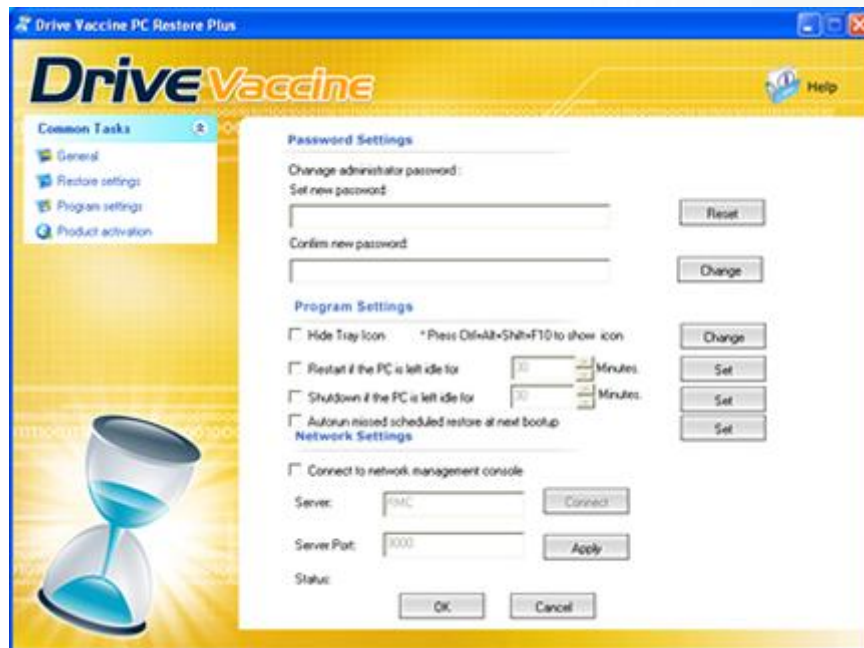
Program Settings

Change Administrator Password

1. Right click the Drive Vaccine PC Restore Plus icon in the system tray, select "**Main Menu**" on the popup menu.



2. In the Main Menu, click on "**Program settings**". The right-hand panel will display the program settings options.
Set a new password for the administrator account and then confirm the new password.



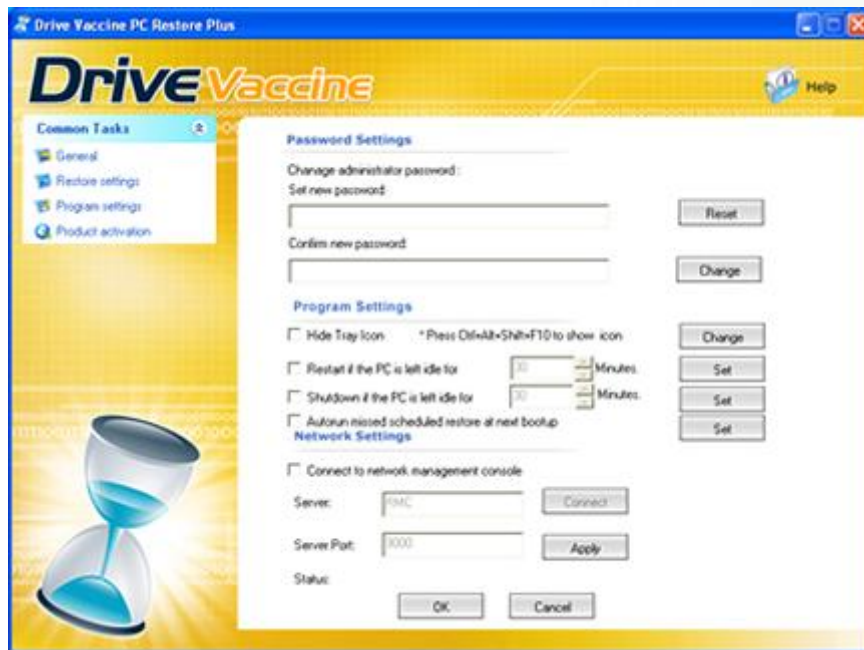
Hide Program Icon

1. Right click the Drive Vaccine PC Restore Plus icon in the system tray, select "**Main Menu**" from the popup menu.



2. In the Main Menu, click on "**Program settings**". The right-side panel will display the program settings options.

Check the hide program icon option. To show the program icon in the system tray, press **Ctrl+Alt+Shift+F10** keys at same time.



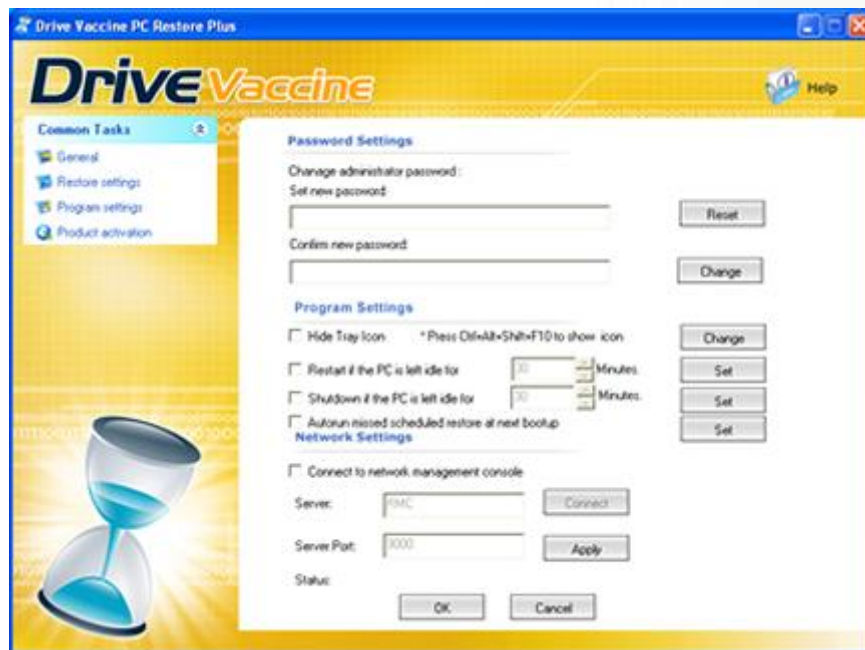
Idle Restore & Shutdown

1. Right click the Drive Vaccine PC Restore Plus icon in the system tray, select "Main Menu" from the popup menu.



2. In the Main Menu, click on "Program settings". The right-side panel will display the program settings options.

Check "Restart/Shutdown if the PC is left idle for X minutes option". The PC will be automatically restarted (restored to baseline) if the keyboard and mouse have no movement for the set amount of time.



Connect to Network management Console

To connect Drive Vaccine PC Restore Plus to a network management console (Drive Vaccine PC Restore Plus RMC) for centralized client management:

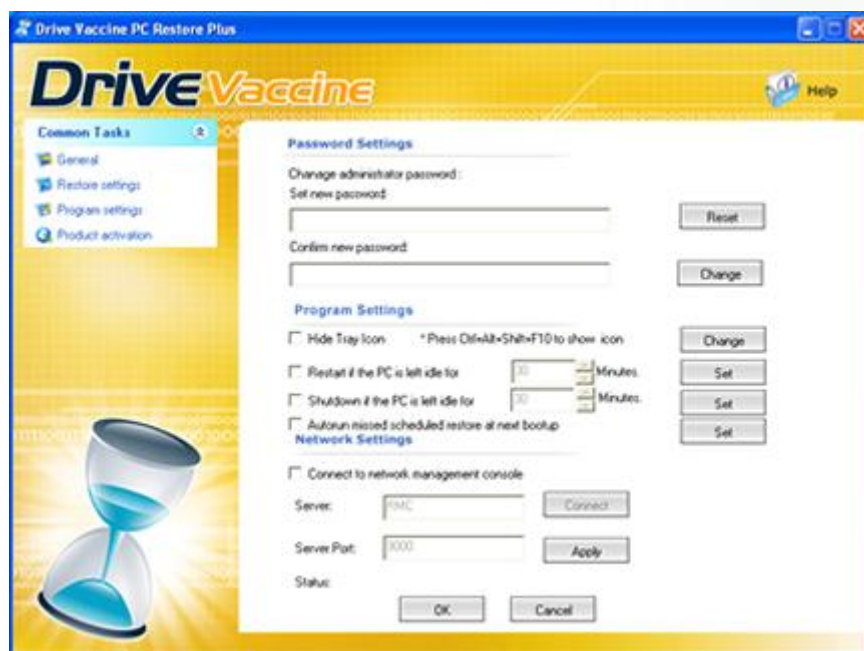
1. Right click the Drive Vaccine PC Restore Plus icon in the system tray, select "**Main Menu**" from the popup menu.



2. In the Main Menu, click on "**Program settings**". The right-hand panel will display the program settings options.

Check "Connect to network management console" option. You need to provide:

- ❖ Computer name or IP address of the computer that has Drive Vaccine PC Restore Plus RMC installed
- ❖ The port number used by Drive Vaccine PC Restore Plus RMC to client connections





Chapter 5

Product Support

Support Options

Horizon Datasys is committed to provide satisfying support and excellent service to our valued customers. Our goal is to provide you with professional assistance in the use of our software through the variety of methods including documentations, online or personal contacts. According to our experience with customers, most of their questions can be answered in our Frequently Asked Question or other various technical white papers.



Please check your questions in the F.A.Q. before proceeding with other support options.

If you were not able to find answers to your questions in the Drive Vaccine PC Restore Plus knowledge base, you might go to Horizon Datasys web site support page for more product related documents, white papers and other information.

<http://www.horizondatasys.com/176422.ihtml>

You can also submit an online support case with Horizon Datasys technical support team through our online support desk.

<http://support.horizondatasys.com/ics/support/splash.asp>

Horizon Datasys customer service representatives can assist you with non-technical questions. Visit Horizon Datasys support web site to find your local customer service number to:

- ❖ Place an order
- ❖ Find a distributor in your area
- ❖ Update your registration information

F.A.Q.

For a list of Frequently Asked Questions about Drive Vaccine PC Restore Plus, please visit:

<http://support.horizondatasys.com/ics/support/splash.asp>

Knowledge Base

Horizon Datasys online knowledge base contains general information about Horizon Datasys products and problems reported by users on various laptop and desktop computers. You can find answers for most of your questions or problems in the <http://support.horizondatasys.com/ics/support/splash.asp>

Help Desk

Horizon Datasys provides an easy to use

<http://support.horizondatasys.com/ics/support/splash.asp>

You can submit online support tickets and get response from our support technicians.



Chapter 6

Command Line Switches

Command Line Switches

Drive Vaccine PC Restore Plus provides you a set of command-line switches to manage the software with batch files or network scripts.

❖ **Restore now**

Shieldcmd.exe /restore /u "administrator" /p "password"

❖ **Update Baseline**

Shieldcmd.exe /snapshot /u "administrator" /p "password"

❖ **Hide System Tray Icon**

Shieldcmd.exe /hideicon /u "administrator" /p "password"

❖ **Unhide System Tray Icon**

Shieldcmd.exe /showicon /u "administrator" /p "password"

❖ **Show Program Help**

Shieldmcd.exe /? or Shieldcmd.exe /help

❖ **Uninstall**

Shieldcmd.exe /uninstall current /u "administrator" /p "password"

❖ **Change Support-Tech restore Password**

Shieldcmd.exe /supportpwd "support password" current /u "administrator" /p "admin password"

❖ Restore Settings

Shieldcmd.exe /restoreschedule Restoretype /time Timeformat /u "administrator" /p "admin password"

Restoretype:

restart

logoff

Restartlogoff

hourly

firstboot

daily

weekly

Timeformat:

hourly time format: minute

daily time format: hour:minute

weekly time format day:hour:minute

For example restore baseline weekly at Monday 19:30pm

Shieldcmd.exe /restoreschedule weekly /time 1:19:30 /u "administrator" /p "admin-pass"



Chapter 7

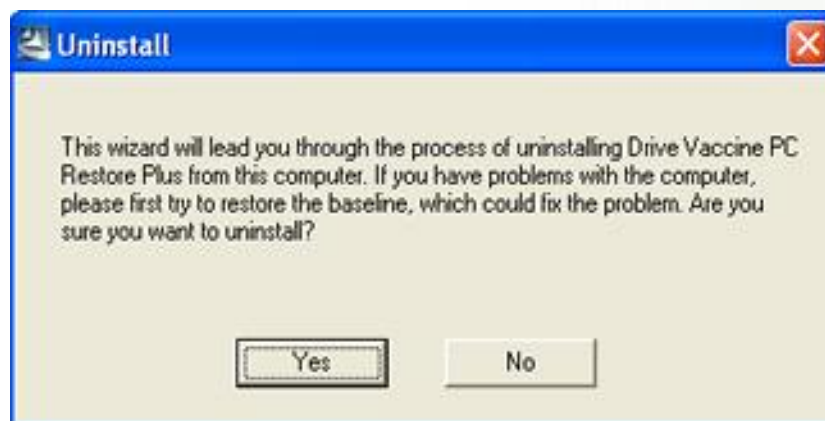
Uninstall

Uninstall

You can uninstall Drive Vaccine PC Restore Plus from your computer through the following method:

- ❖ Uninstall Drive Vaccine PC Restore Plus from your computer's Control Panel, Add/Remove Programs

Uninstall needs to restart the computer, select Yes to restart.



If you have an exemption drive configured for Drive Vaccine PC Restore Plus, you will be promoted to uninstall (remove) the exemption drive after reboot.



BEFORE REMOVING THE EXEMPTION DRIVE, YOU MUST SAVE (COPY OR MOVE) THE DATA IN THE EXEMPTION DRIVE TO ANOTHER DRIVE, REMOVING THE EXEMPTION DRIVE WILL LOSE ALL THE DATA ON THE EXEMPTION DRIVE!



If you have problem with the computer, DO NOT attempt to uninstall Drive Vaccine PC Restore Plus first, use Restore Now to repair the system instead.